

Weekly Bulletin of

The Jerusalem Rotary Club

Club # 13459, District 2490

13 January 2016

Club Officers

President:

P/ Yaron Amitai

Secretary:

R/ David Lilienthal

Treasurer:

P/P Eli Kenner

Immediate Past President:

P/P Nezar Tannous

President Elect 2016-17:

R/ Nuha Tannous

Board Members:

R/ Art Braunstein

R/ Geert Cohen Stuart

P/P Sandi Darmon

P/P Ruth Harris

P/P David Seligman

R/ Dan Shanit

R/ Nuha Tannous

R/Guido de Werd

P/P Kern Wisman

PDG Irene Lewitt (ex-officio)

Upcoming Programme

20 January Meeting:

Speaker: Kern Wisman

"From Volcanoes, to Jungles, to the Desert"

27 January Meeting:

Special Dinner Outing

03 February Meeting:

Speaker: Moshe Arens

Former Minister of Defense

**"The Lavi Fighter Jet—
Past Present and Future"**

10 February Meeting:

Club Assembly



This Week's Programme

Dr. Moshe Shirav-Schwartz, GSI (Ret.)

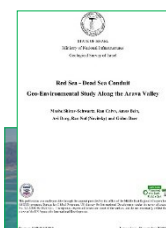
Economic and Environmental Geologist

"Whither the Dead Sea"

Dr. Shirav-Schwartz specializes in economic geology, oil shales, natural radiation, radon, environmental geology & geochemistry.

He received his B.Sc. and M.Sc. In geology from the Hebrew University, Jerusalem and his D.Sc. in Environmental Engineering from the Technion, Haifa.

Professionally, he has done research and served as a teaching assistant at Hebrew, worked on a DAAD Grant for oil shale and lignite research at the Federal Geological Survey, Hannover, Germany, completed a study for a US DOE project in Kentucky, USA on the elemental release characteristics of Eastern (USA) oil shale and coal as well as coal ash research in the United States. Since 1971, he has been a researcher for the Geological Survey of Israel, twice serving as its Deputy-Director, then Head of the Mineral and Energy Resources Division and most recently Head of the Geo-Information Division



He is widely published on subjects relating to element leaching in oil shales, radon mapping and even gold in the South of Israel.

In 2006 he was part of an interdisciplinary team writing a Policy Document for the Israeli government : "The Dead Sea Basin Assessment and Implications for the Future in Conditions of Continued Decreasing Water Level"

On behalf of EcoPeace, he also headed a team of the geological survey working on geo-environmental issues in regard to the planned water carrier from the red sea to the Dead Sea.



You've Got Mail

Dear PP Kern Wisman,
Bulletin Editor, RC Jerusalem.

Happy New Year. I stumbled upon the history of our great club, the Rotary Club of Jerusalem. It made an interesting reading. Several 'firsts' were mentioned. Surprisingly, no mention was made that the club was the first and only club yet to admit an African of Nigerian descent in its membership. Would this go against political correctness or connote racism? Personally I do not think so. It is part of the history of a club that I am so pleased to identify with. I was inducted in 2000 and transferred to D9110 Nigeria on relocation in 2003 to commence the representation of a couple of US States Offices for International Marketing.



This is my personal opinion. It is also part of history, I think!

Yours in Rotary service,
Ndudi Osakwe
Principal Consultant,
IBG Nigeria, Lagos, Nigeria.

Dear Kern,

at the beginning of the new year I wish all members of my good old Jerusalem club health, happiness and success. Thanks to the excellent bulletin I'm well informed on what's going on in Jerusa-



lem, I see pictures of old friends who amazingly get younger with every edition and admire the amount and quality of actions and projects you are launching. As to the latter, I was given the summary of Your Rotary Peace Education Initiative and a letter with the request to the Bonn club to support the initiative. May it be providence, may it be coincidence, I'll be the president of my Bonn club in the Rotarian year 2016/17. They didn't allow me to rest on laurels I pretended to have earned in Jerusalem, but made a merciless appeal to my sense of duty. After all this opens a window of opportunity to deal more closely with your project. Since Christiane and I are planning to come to Jerusalem in spring we can talk about it in detail and apart from this sink some bottles of wine in good company. I'm really looking forward to attending your meeting and see you all. Over Christmas we had a big family gathering in our house (picture attached) and enjoyed the time greatly.

I hope you are all keeping well and send our warmest greetings from the river Rhine to the hills of Jerusalem

Yours Nikolaus



Rotary International

Susan Davis Awarded

Service to Humanity Award

Susan Davis says about the recent awarding to her of the 2015-16 Rotary Foundation Global Alumni Service to Humanity Award; "It feels like a circle of completion," says Davis, who was a Rotary Foundation Ambassadorial Scholar in 1980-81, doing graduate studies in international relations at Oxford University in England. "Rotary invested

in me when I was young, and now is celebrating the harvest."



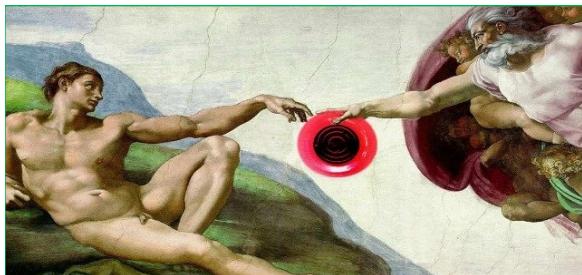
A decade ago, Davis co-founded [BRAC USA](#) to advance the mission of BRAC -- Bangladesh Rehabilitation Assistance Committee -- the world's largest nongovernmental development organization, which was founded after Bangladesh's partition from Pakistan in the 1970s. The U.S. branch is dedicated to fighting poverty and to creating opportunities for the poor in Africa and elsewhere.



International Toast

The Rotary Club of Woodland Hills, California

A precious gift of biblical proportions was imparted to a waiting humanity on this day, 13 January, in 1957.



Humankind and lower species, as well, seeking to improve the quality of their recreational lives in parks and home yards and open spaces around the world owe their enjoyment, unknowingly, to this day.



For it was on this day that the Whamo Toy Company, based in Woodland Hills, California, finalized the purchase of the rights from



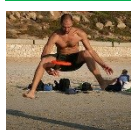
Fred Morrison for his "Pluto Platter Putt-Putt", renaming it and marketing it worldwide as a "Frisbee", making

dogs everywhere eternally grateful and starting an enduring recreational pastime and athletic sport craze.

Whether you subscribe to the classic fling throw or the over-hand baseball release or your catching technique is the tried



and true two hander or the more complicated between the legs on one finger catch, Frisbees have become a part of how we



recreate, how we compete and how we play with our animals.



In homage to this gift to our recreational



Rotary Club of Woodland Hills

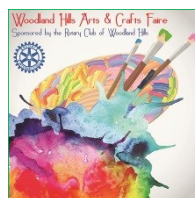
health we toast the Club of Woodland Hills as the club located in the city which is home to the Whamo Toy Company.

The club, founded in 1956 has 96 members and meets Wednesdays at 12:00 at the Woodland Hills Country Club. Their President, this year is Jeffrey Stern.



Among the activities of the Club are the following:

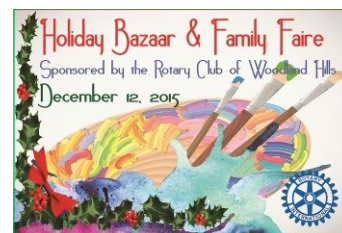
The 46th Arts and Crafts Faire provides a place for local artists, businesses, food vendors, and non-profits to display their wares and services. The proceeds from the event go to benefit community charities and schools including RotaCare (a local health care clinic).



A fund raiser Poker Tournament and Las Vegas night was held in October to raise funds for the Club's charitable activities.



A Holiday Bazaar and Family Faire provided display space and organization for over 150 exhibitors, featuring: arts, crafts, food, and community service organizations, as well as entertainment featuring holiday music and activities for kids, adults and pets.

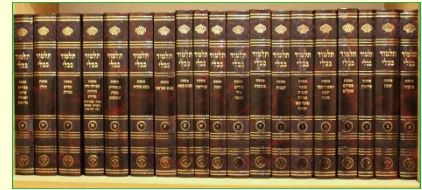


At Thanksgiving the Club provided one-thousand-pounds of turkey; 800 pound of potatoes; 20 gallons of vegetable oil; 126 lbs. of corn; 175 lbs. of black beans; 400 lbs. of onions; 26 gallons of chicken broth; 400 lbs. of rice; 5,000 tortillas; and 240 lbs. of apples organized in 80 baskets for families of needy students who attend Fullbright Elementary School in Winnetka.



Happy Hour

Talmudic Wisdom in Action



A poor Jew finds a wallet with \$700 in it. At his synagogue, he reads a notice saying that a wealthy congregant lost his wallet and is offering a \$100 reward for it. He spots the owner and gives him the wallet.



The rich man counts the money and says, "I see you already took your reward."

The poor man answers, "What?"

"This wallet had \$800 in it when I lost it."

They begin arguing, and eventually come before the rabbi.

Both state their case. The rich man concludes by saying, "Rabbi, I trust you believe ME."

The rabbi says, "Of course," and the rich man smiles. The poor man is crushed. Then the rabbi hands the wallet to the poor man.

"What are you doing?!" yells the rich man.

The rabbi answers, "You are, of course, an honest man, and you say the wallet you lost had \$800 in it. Therefore I'm sure it did. But if the man who found this wallet is a liar and a thief, he wouldn't have returned it at all. Which means that this wallet must be-



long to somebody else. If that man steps forward, he'll get the money. Until then, it belongs to the man who found it."

"What about my money?" the rich man asks.

"Well, we'll just have to wait until somebody finds a wallet with \$800 in it..."

Contribution by David L. ♣

Jerusalem Rotary Club

Weekly Lunch Meetings are at the YMCA, 26 King David St, Jerusalem Wednesdays at 13:00. The last Wednesday of each month is a dinner meeting at 19:00.

Meetings are conducted in English.

Visiting Rotarians and other guests are welcome.

Luncheon/Dinner costs: NIS 75, students and lone soldiers: NIS 50, children under 18: NIS 30.

For Kosher meals please book in advance. For this and other enquiries please contact us through the Contact section on the website.

Please visit our website:

www.rotaryclubjerusalem.org

Follow the Jerusalem Rotary Club on social media: (Press 'Control' and click on icon to go to site)

